

2018 SURVEY RESULTS

NO. OF HOMES VISITED BY FIRE CREW

9220 **6113**

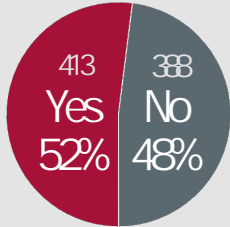
*Out of 3107 homes visited by Smoke Alarm Specialists 1026 residents answered the door and 801 agreed to participate in the survey

BY SPECIALISTS*
3107

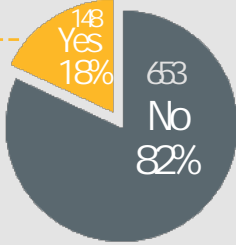
STAY FIRE SMART PROGRAM 2018



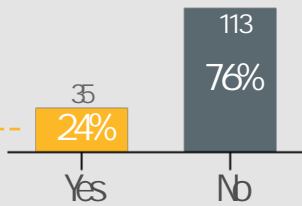
Did you know smoke and carbon monoxide alarms have an expiry date?



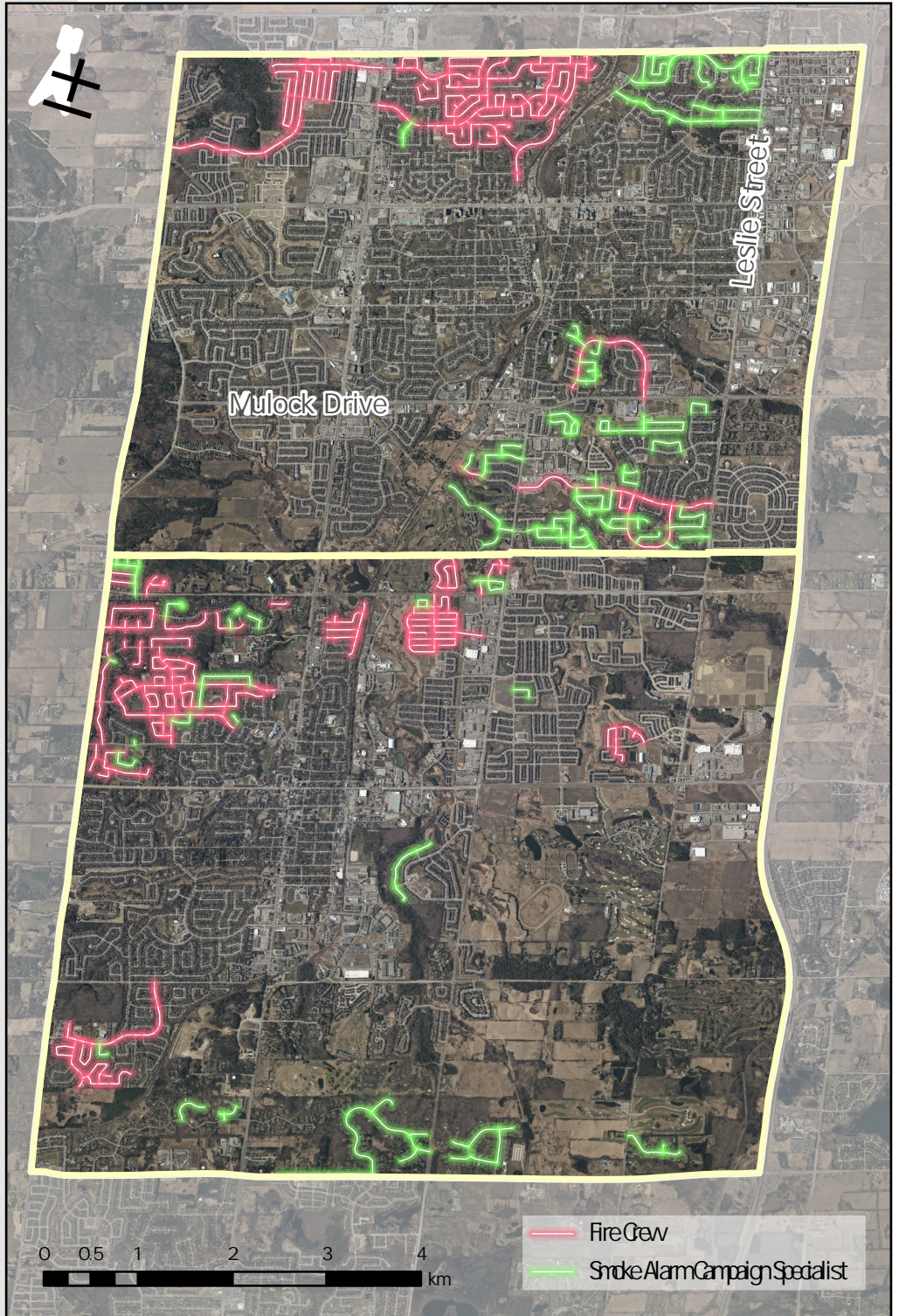
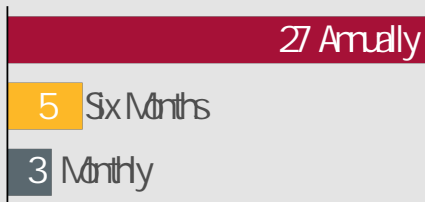
Do you have a Home Escape Plan?



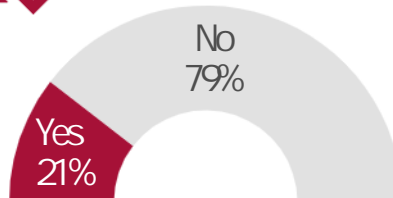
Do you practice your Home Escape Plan?



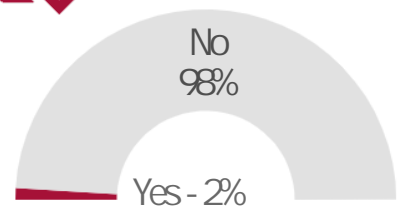
How often do you practice your Home Escape Plan?



Interested in smoke or carbon monoxide alarm inspection?



Interested in assistance to develop a Home Escape Plan?



Designed & Produced by Information Technology - GIS. Printed: February 2019. Sources: 2018 Colour Ortho Imagery - First Base Solutions Inc., 2018 Orthophotography, Land Parcel Boundaries - © Teranet Inc. and its suppliers. All rights reserved. NOT A PLAN OF SURVEY. 2019. Roads, Municipal Boundary - Data, Analytics and Visualization Services Branch Corporate Services. The Regional Municipality of York, 2019. All other data - The Town of Newmarket, 2019.

DISCLAIMER: This mapping is based on the POLARIS parcel fabric product compiled using Land Registry System records and recent surveys and control points where available. This mapping is a representation of the earth's surface and provides estimates of area and distance. This document is provided by the town of Newmarket for your personal, non-commercial use. The information depicted on this map has been compiled from various sources. While every effort has been made to accurately depict the information, data and/or mapping errors may exist. This map has been produced for illustrative purposes only. It is not a substitute for a legal survey.

Path G:\Projects_PRO\Office of the CAO\Central York Fire\MapProjects\CYFS_StayFireSmart\StayFireSmart_SurveyResult.aprx